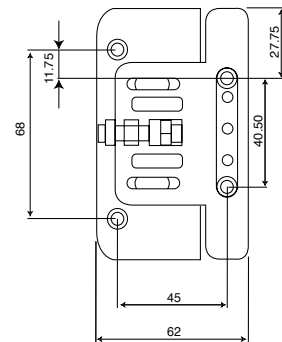
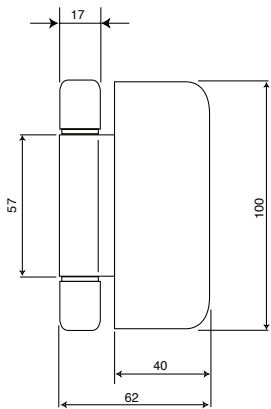
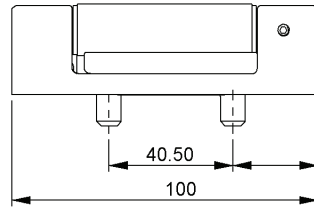
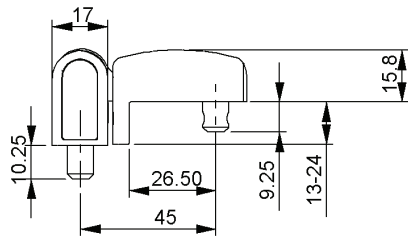


Technical Data

| | |
|-----------------------------|---|
| Type | Flag / butt |
| Lateral Adjustment (mm) | +/- 4 |
| Height Adjustment (mm) | + 4 |
| Compression Adjustment (mm) | +/- 1 |
| Suits Over-rebate (mm) | 14 to 25 |
| Maximum Sash Weight (kg) | 80 (2 hinges) |
| Finishes | Chrome PVD, gold PVD, white, brown, light oak |
| Material Specification: | |
| Frame & Sash Parts | Zinc die cast Z13 to BS1004 |
| Powder Coated | Syntha pulvin plus |
| Pin | Mild steel |
| Box Quantity | 10 |

Technical Drawings



Evolution Hinge

The Evolution combines the adjustment and strength of a flag hinge with the anti-lift properties and subtle sight lines of a butt hinge to provide a hinge with a wealth of features.

- High security hinge - successfully tested to PAS 24-1 without the need for additional hinge protectors
- Stainless steel hinge pin
- Screw fixings secure through the over-rebate and fix into bosses
- Adjustable to ensure optimal weather tightness and installation
- Lateral adjustment +/-4mm
- Vertical adjustment +4mm
- Adjustment can be carried out without dis-mounting door leaf
- 8mm diameter bosses provide additional stability
- Suitable for sash over-rebates sizes from 14mm to 25mm
- Infill pieces available for use on ovulo and chamfered profiles
- Available in a range of attractive finishes



Part Numbers

| Description | Over-rebate (mm) | Chrome PVD | Gold PVD | White | Brown | Light Oak |
|-----------------|------------------|------------|----------|--------|--------|-----------|
| Evolution Hinge | 15 or 18 | 024307 | 024303 | 024302 | 024301 | 024304 |
| Evolution Hinge | 16 or 17 | 024317 | 024313 | 024312 | 024311 | 024314 |
| Evolution Hinge | 19 or 22 | 024327 | 024323 | 024322 | 024321 | 024324 |
| Evolution Hinge | 20 or 21 | 024337 | 024333 | 024332 | 024331 | 024334 |

Guarantees & Accreditations

| | |
|----------------------|---------|
| Mechanical Guarantee | 5 years |
| Labour Guarantee | 2 years |